

4G MILL GENERAL MACHINING

2023 *This is For You!!*



Ranurado y Escuadrado

PROMOTION



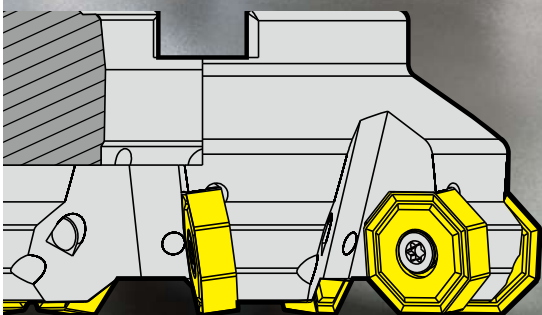
Fresado Gran Avance



Planeado con insertos positivos



Planeado con insertos negativos



Product Overview

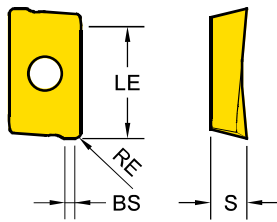
Milling Grades

Milling Grades		P Steel					M Stainless steel				K Cast iron				N Non-ferrous				S Superalloys			
		P05	P15	P25	P35	P45	M05	M15	M25	M35	K05	K15	K25	K35	N05	N15	N25	N35	S05	S15	S25	S35
PVD	YG602			602					602				602								602	
	YG622			622									622									
	YG713		713																			
	YG613				613				613													613
CVD	YG5020												5020									
Uncoated	YG50															50						

<p>YG602</p> <p>P20 - P35 M20 - M40 K20 - K40 S15 - S25</p>  <p>PVD - TiAlN</p>	<p>Grado universal para aplicaciones generales</p> <ul style="list-style-type: none"> Recubrimiento PVD ultradenso con una resistencia térmica óptima Substrato sub-micrograno diseñado para aplicaciones exigentes
<p>YG622</p> <p>P20 - P40 K20 - K40</p>  <p>PVD - TiAlN</p>	<p>Grado Optimizado para Aceros aleados y preendurecidos</p> <p>Excelente dureza y resistencia a la oxidación a altas velocidad</p>
<p>YG713</p> <p>P10 - P30</p>  <p>PVD - AlTiCrN</p>	<p>Grado general para aceros</p>
<p>YG613</p> <p>P30 - P50 M30 - M40 S30</p>  <p>PVD - TiAlN</p>	<p>Grado tenaz para aceros inoxidables y superaleaciones</p> <ul style="list-style-type: none"> Nueva capa de recubrimiento de alta tenacidad y lubricación sobre sustrato de grano ultrafino de alta tenacidad Los sustratos más resistentes proporcionan un excelente rendimiento de corte en acero inoxidable
<p>YG5020</p> <p>K01 - K30</p>  <p>CVD TiCN - Al₂O₃</p>	<p>Grado CVD para fundición</p> <ul style="list-style-type: none"> Recubrimiento CVD para una excelente resistencia al desgaste Tenacidad mejorada para una mayor resistencia al astillamiento
<p>YG50</p> <p>N05 - N20</p>  <p>Uncoated</p>	<p>Grado sin recubrir para aluminio</p> <ul style="list-style-type: none"> Substrato sub-micrograno para una alta resistencia al desgaste Calidad lapeada que evita la adhesión de material en la arista de corte
<p>YG012</p> <p>P20 - P40</p>  <p>PVD TiSiN</p>	<p>Nuevo grado para aceros para moldes HRc 30 ~50</p> <ul style="list-style-type: none"> Substrato sub-micrograno para una alta resistencia al desgaste Nuevo sustrato desarrollado para un buen balance entre resistencia al desgaste y tenacidad

Milling - Shoulder Milling - Inserts

APKT - Shoulder Milling Positive (2 Corner)



Series	LE	IC	S
APKT 1003	9.9	6.7	3.6
APKT 1604	15.2	9.4	5.3

EDP 1200..

●: Stock item ●: NEW ITEM 2023

P25	M30	S20	P30	P30	P30	P40	K15	K15	P.V.P.	
						M40	H15			

APKT	Designation	RE (mm)	Fz (mm/tooth)	BS (mm)	YG602	YG622	YG012	YG713	YG613	YG501	YG5020	YG602 YG713	YG613 YG622 YG012
APKT General	APKT 100305 PDTR	0.5	0.15 ~ 0.24	0.86	●	●	●	●	●			8.21€	8.62€
	APKT 100308 PDTR	0.8	0.15 ~ 0.24	0.90	●	●	●	●	●			8.21€	8.62€
	APKT 160404 PDTR	0.4	0.15 ~ 0.25	1.11	●			●				9.49€	
	APKT 160408 PDTR	0.8	0.15 ~ 0.30	1.32	●			●	●			9.49€	9.93€
	APKT 160412 PDTR	1.2	0.15 ~ 0.32	1.13	●			●				9.49€	
-ST Stainless Steel Super Alloy	APKT 100305 - ST	0.5	0.08 ~ 0.22	0.86	●				●			8.21€	8.62€
	APKT 160408 - ST	0.8	0.08 ~ 0.25	1.32	●				●			9.49€	9.93€
-TR Hardened Steel	APKT 160404 - TR	0.4	0.26 ~ 0.40	2.12	●	●						9.49€	9.93€
	APKT 160408 - TR	0.8	0.26 ~ 0.40	1.32	●	●	●	●				9.49€	9.93€
	APKT 160412 - TR	1.2	0.26 ~ 0.40	2.40	●	●						9.49€	9.93€
	APKT 160416 - TR	1.6	0.26 ~ 0.40	2.40	●	●	●					9.49€	9.93€
	APKT 160424 - TR	2.4	0.26 ~ 0.40	1.50	●	●	●					9.49€	9.93€

APGT	Designation	RE (mm)	Fz (mm/tooth)	BS (mm)	YG602	YG622	YG012	YG713	YG613	YG50	YG500	P.V.P.	
-AL Aluminum	APGT 100305 - AL*	0.5	0.07~0.50	0.86							●	13.05€	
	APGT 160408 - AL*	0.8	0.07~0.50	1.32							●	15.10€	

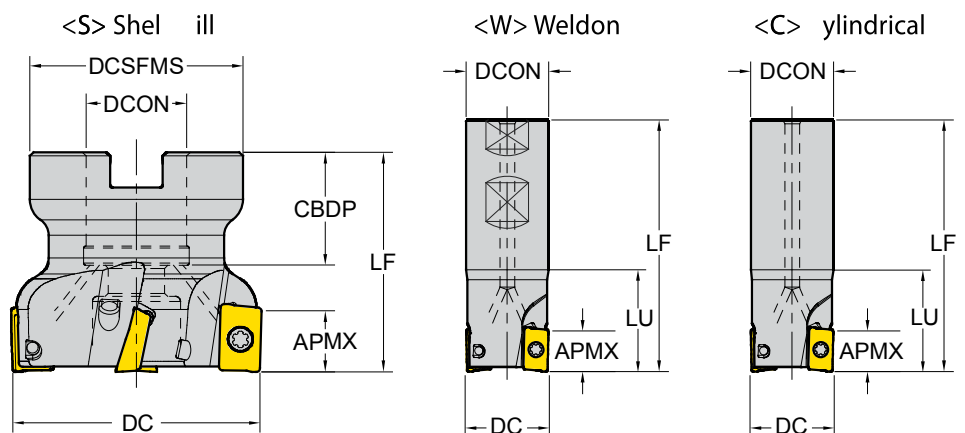
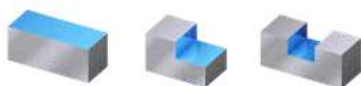
*Consulte el precio final del set con insertos para aluminio

P	M	K	N	S	H	
P	M	K				PDTR <ul style="list-style-type: none"> Primera opción para aplicaciones generales
	M		S			-ST <ul style="list-style-type: none"> Para Aceros Inoxidables y Súper Aleaciones Arista con mas filo de corte
P		K				-TR <ul style="list-style-type: none"> Para aceros endurecidos Arista reforzada
			N			-AL <ul style="list-style-type: none"> Para Aluminio Arista viva

Ranurado - Escuadrado
Cuerpos para APKT

Series	Designación	EDP 1700..	DC	Z	LU	LF	DCON	CBDP	DCSFMS	PCD1	●	P.V.P. SET 30 INSERTOS	
												YG602 YG713	YG622 YG613 YG012
APKT 1003	E90 - APKT10 - D16Z2W16 - L100	0082	16	2	-	100	16	-	-	-	●	162.00 €	166.00 €
	E90 - APKT10 - D16Z2C16 - L100	0083	16	2	-	100	16	-	-	-	●	162.00 €	166.00 €
	E90 - APKT10 - D20Z3W20 - L100	0461	20	3	30	100	20	-	-	-	●	170.00 €	175.00 €
	E90 - APKT10 - D20Z3C20 - L120	0085	20	3	-	120	20	-	-	-	●	170.00 €	175.00 €
APKT 1604	E90 - APKT16 - D25Z2W25 - L100	0562	25	2	35	100	25	-	-	-	●	192.00 €	198.00 €
	E90 - APKT16 - D32Z3W32 - L110	0565	32	3	40	110	32	-	-	-	●	208.00 €	202.00 €
	F90 - APKT16 - D50Z5S22	0095	50	5	-	40	22	20	45	-	●	192.00 €	215.00 €
	F90 - APKT16 - D63Z6S22	0096	63	6	-	40	22	20	50	-	●	220.00 €	225.00 €
	F90 - APKT16 - D80Z7S27	0097	80	7	-	50	27	23	56	-	●	238.00 €	242.00 €
	F90 - APKT16 - D100Z8S32	0181	100	8	-	50	32	26	65	-	●	258.00 €	262.00 €
	F90 - APKT16 - D125Z9S40 - WOC	0238	125	9	-	63	40	32	80	-	X	305.00 €	312.00 €
F90 - APKT16 - D160Z10S40 - WOC	0568	160	10	-	63	40	32	110	66.7	X	355.00 €	360.00 €	

Ángulo de corte : 90°
 Inserto de 2 puntas positivo



***PROMOCION DISPONIBLE
 PARA CUALQUIER CUERPO
 APKT10/16 DE NUESTRO
 PROGRAMA.
 CONSULTENOS!!!**

Milling - Face Milling - Inserts
SEKT - Face Milling Positive (4 Corners)

SET PLANEAR + 30 INSERTOS !!!



Series	IC	S
SEKT 12T3	13.4	4

SEKT12T3 SEKT12T3-ST SEGT12T3-AL

EDP 1200..

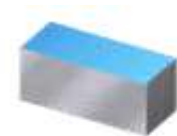
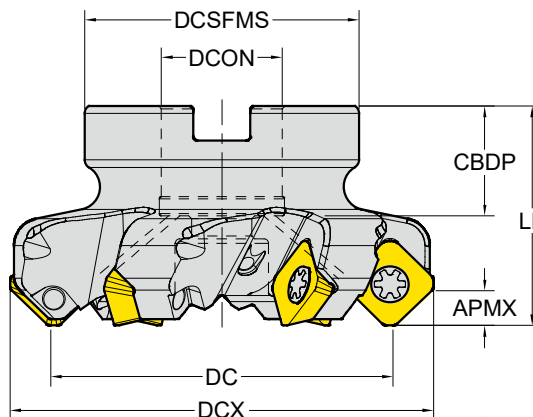
●: Stock item ●: NEW ITEM 2023

		P25	P30	P20	P30	P40	N15	P.V.P.					
		M30	K30			M40		YG602	YG622				
		S20						YG50	YG613				
SEKT12T3	Designation	RE (mm)	Fz (mm/tooth)	BS (mm)	YG602	YG622	YG712	YG713	YG613	YG50	YG602	YG622	YG613
Usos Generales	SEKT 12T3 AGTN	1.5	0.15~0.30	1.30	● 0056	● 0688					9.79€		11.24€
Aceros Inoxidables	SEKT 12T3 -ST	1.5	0.08~0.30	2.00	● 0271				● 0689		9.79€		11.24€
Aluminio	SEGT 12T3 -AL	1.5	0.1~0.35	1.94						● 0468	15.53€		

*Insertos para aluminio a título informativo. Consulte el precio final del set con los insertos para aluminio

Fresado / planeado
Cuerpos para SEKT12T3

Ángulo de corte : 45°
 Inserto de 4 puntas positivo



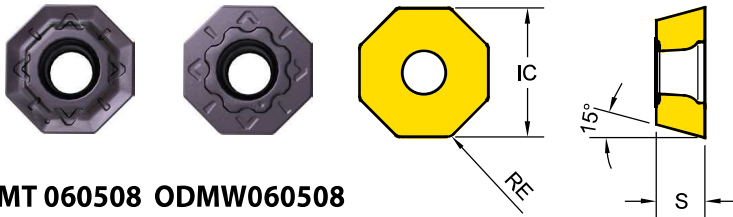
Series	APMX	Designación	EDP 1700..	DC	DCX	Z	LF	DCON	CDBP	DCSFMS	PCD1	●	P.V.P. SET 30 INSERTOS	
													YG602	YG622
SEKT 12T3	6.0	F45 - SE12T3 - D50Z4S22	0500	50	63	4	40	22	22	48	-	●	222.00€	228.00€
		F45 - SE12T3 - D63Z5S22	0501	63	76	5	40	22	22	48	-	●	238.00€	242.00€
		F45 - SE12T3 - D80Z6S27	0502	80	93	6	50	27	25	58	-	●	255.00€	260.00€
		F45 - SE12T3 - D100Z7S32	0503	100	113	7	50	32	26	65	-	●	285.00€	288.00€
		F45 - SE12T3 - D125Z8S40 - WOC	0504	125	138	8	63	40	32	85	-	X	335.00€	340.00€
		F45 - SE12T3 - D160Z10S40 - WOC	0505	160	173	10	63	40	32	110	66.7	X	385.00€	395.00€
		F45 - SE12T3 - D200Z12S60 - WOC		200	213	12	63	60					X	CONSULTAR

EJEMPLO DE PEDIDO: 30 INSERTOS 12000056 + 1 PLATO 17000501 = 238.00 € !!!

Milling - Face Milling - Inserts

ODMT, ODMW Face milling positive (8 Corners)

SET PLANEAR + 30 INSERTOS !!!



ODMT 060508 ODMW060508

Series	IC	S
ODM*0605	15.9	5.6

EDP 1200..

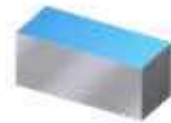
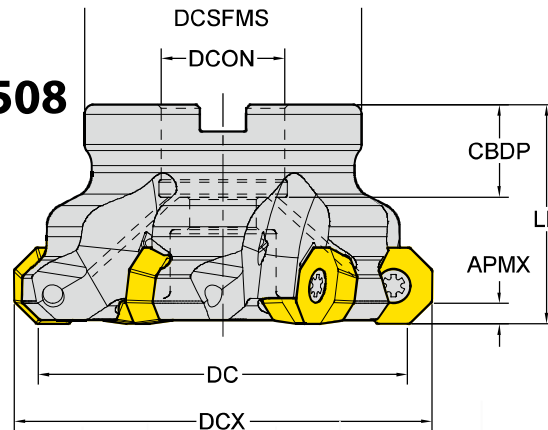
●: Stock item ●: NEW ITEM 2023

ODMT/ODMW	Designation	RE (mm)	Fz (mm/tooth)	EDP 1200..						P.V.P.			
				YG602	YG622	YG712	YG713	YG613	YG501	YG5020	YG602 YG713	YG622 YG613	
Uso General	ODMT 060508	0.8	0.21 ~ 0.35	● 0030	● 0438	● 0659	● 0675					11.78 €	12.31 €
Aceros duros y fundición	ODMW 060508	0.8	0.26 ~ 0.40	● 0031								11.78 €	

Fresado / planeado

Cuerpos para ODM*060508

Ángulo de corte : 43°
Inserto de 8 puntas positivo



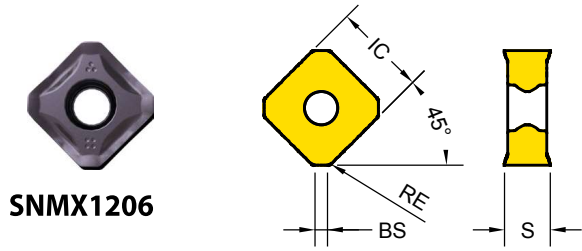
Series	APMX	Designación	EDP 1700..	DC	DCX	Z	LF	DCON	CDBP	DCSFMS	PCD1	●	P.V.P. SET 30 INSERTOS	
													YG602 YG713	YG622 YG613
ODMT ODMW 0605	3.5	F43 - ODMT06 - D63Z5S22	0001	63	73	5	40	22	20	50	-	●	265.00 €	270.00 €
		F43 - ODMT06 - D80Z6S27	0002	80	90	6	50	27	23	56	-	●	280.00 €	285.00 €
		F43 - ODMT06 - D100Z7S32	0003	100	110	7	50	32	26	78	-	●	310.00 €	315.00 €
		F43 - ODMT06 - D125Z8S40	0004	125	135	8	63	40	28	89	-	●	360.00 €	365.00 €

EJEMPLO DE PEDIDO: 30 INSERTOS 12000030 + 1 PLATO 17000002



Milling - Face Milling - Inserts
SNMX - Face Milling Negative (8 Corners)

SET PLANEAR + 30 INSERTOS !!!



Series	IC	S
SNMX 1206	12.7	6.25

SNMX1206

EDP 1200..

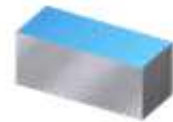
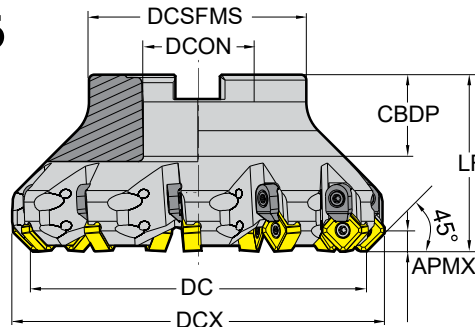
●: Stock item ●: NEW ITEM 2023

SNMX1206	Designation	RE (mm)	Fz (mm/tooth)	BS (mm)	Material							P.V.P.				
					YG012	YG602	YG622	YG712	YG713	YG613	YG501	YG5020	YG501 YG602 YG712 YG713	YG012 YG613 YG622 YG5020		
Usó General	SNMX 1206 ANN	0.8	0.16 ~ 0.34	1.70	●	●	●	●	●	●	●	●	●	●	15.83 €	16.51 €
Usó General	SNMX 1206 QNN	0.8	0.16 ~ 0.34	1.70	●	●	●	●	●	●	●	●	●	●	15.83 €	16.51 €

Fresado / planeado

Cuerpos para SNMX1206

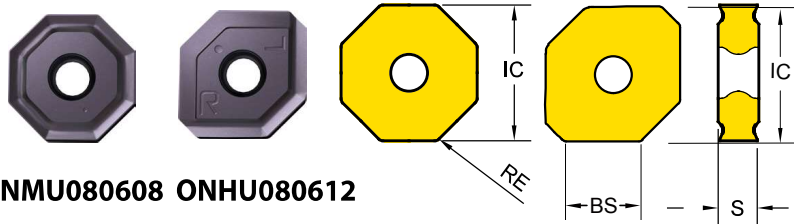
Ángulo de corte : 45° Inserto de 8 puntas negativo



Series	APMX	Designación	EDP 1700..	DC	DCX	Z	LF	DCON	CBDP	DCSFMS	PCD1	●	P.V.P. SET 30 INSERTOS	
													YG602 YG713	YG622 YG613
SNMX 1206	6.0	F45 - SNMX12 - D50Z4S22	0506	50	63	4	42	22	22	42	-	●	285.00 €	305.00 €
		F45 - SNMX12 - D63Z6S22	0508	63	76	6	42	22	22	48	-	●	298.00 €	320.00 €
		F45 - SNMX12 - D80Z7S27	0510	80	93	7	52	27	25	58	-	●	320.00 €	340.00 €
		F45 - SNMX12 - D100Z8S32	0513	100	113	8	52	32	26	67	-	●	345.00 €	365.00 €
		F45 - SNMX12 - D125Z11S40 - WOC	0514	125	138	11	65	40	32	80	-	X	410.00 €	430.00 €
		F45 - SNMX12 - D160Z12S40 - WOC	0515	160	173	12	65	40	32	110	66.7	X	455.00 €	480.00 €
		F45 - SNMX12 - D200Z14S60 - WOC	0516	200	213	14	65	60	40	130	101.6	X	650.00 €	670.00 €

EJEMPLO DE PEDIDO: 30 INSERTOS 12000231 + 1 PLATO 17000508 = 298.00 € !!!





Series	IC	S
ONMU 0806	20.2	5.8

ONMU080608 ONHU080612

EDP 1200..

●: Stock item ●: NEW ITEM 2023

ONMU/ONHU	Designation	RE (mm)	Fz (mm/tooth)	BS (mm)	P.V.P.											
					YG012	YG602	YG622	YG712	YG713	YG613	YG501	YG5020	YG501 YG602 YG712 YG713	YG012 YG613 YG622 YG5020		
Uso General	ONMU 080608	0.8	0.22~0.50		●	●	●	●	●	●	●	●	●	●	18.97 €	19.73 €
Uso General	ONMU 080612	1.2	0.05~0.40		●	●	●	●	●	●	●	●	●	●		19.73 €
Fundición	ONMU 080620	2.0	0.05~0.50		●	●	●	●	●	●	●	●	●	●		19.73 €
Inserto Wiper	ONHU 080612*	1.2	0.08~0.25	10.6								●	●	●	25.69 €	24.64 €

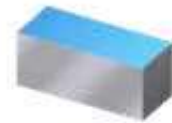
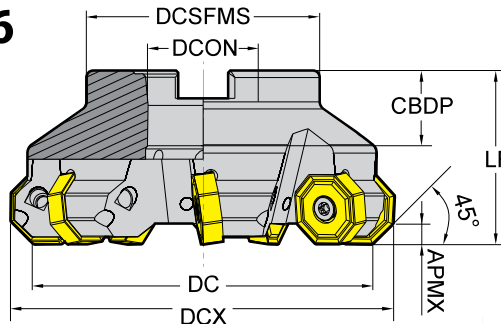
*inserto wiper a título informativo, no forma parte de los sets

Fresado / planeado

Cuerpos para ON*U 0806

Ángulo de corte : 45°

Inserto de 16 puntas negativo

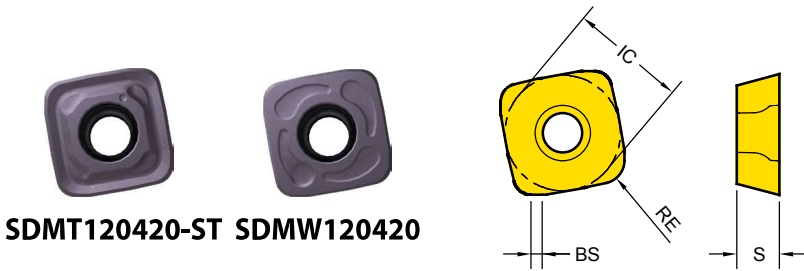


Series	APMX	Designación	EDP 1700..	DC	DCX	Z	LF	DCON	CBDP	DCSFMS	PCD1	●	P.V.P. SET 30 INSERTOS	
													YG602 YG713	YG613 YG5020
ONMU 0806	5.5	F45 - ONMU08 - D63Z5S22	0493	63	75	5	40	22	22	49	-	●	375.00 €	385.00 €
		F45 - ONMU08 - D80Z6S27	0494	80	92	6	50	27	25	58	-	●	395.00 €	405.00 €
		F45 - ONMU08 - D100Z7S32	0495	100	112	7	50	32	26	67	-	●	415.00 €	425.00 €
		F45 - ONMU08 - D125Z8S40 - WOC	0496	125	137	8	63	40	32	87	-	X	450.00 €	460.00 €
		F45 - ONMU08 - D160Z10S40 - WOC	0497	160	172	10	63	40	32	107	66.7	X	525.00 €	535.00 €
		F45 - ONMU08 - D200Z12S60 - WOC	0498	200	212	12	63	60	40	130	101.6	X	700.00 €	710.00 €
		F45 - ONMU08 - D315Z16S60 - WOC	0499	315	327	16	63	60	40	220	101.6	X	1010.00 €	1025.00 €

EJEMPLO DE PEDIDO: 30 INSERTOS 1200233 + 1 PLATO 17000494 = 395.00 € !!!

Milling - High Feed Milling - Inserts
SDMT / W - High Feed Positive (4 Corners)

SET PLANEAR + 30 INSERTOS !!!



Series	IC	S
SDM* 1204	12.7	4.7

EDP 1200..

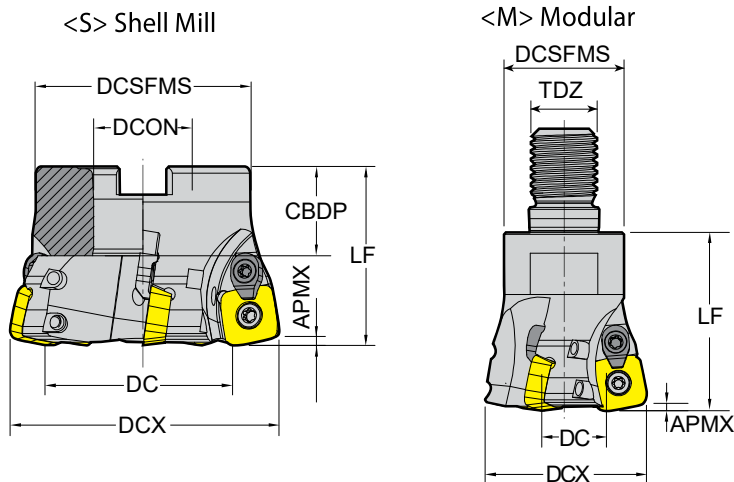
● : Stock item ● : NEW ITEM 2023

P25	M30	P30	P30	P30	P40	K15	K15	P.V.P.	
K30	S20	K30	P30	P30	M40	H15	K15	YG602	YG622
								YG713	YG613
								YG501	YG012
								YG5020	YG012

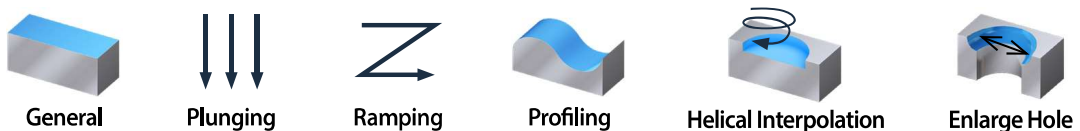
ODMT/ODMW	Designation	RE (mm)	Fz (mm/tooth)	BS (mm)	YG602	YG622	YG012	YG713	YG613	YG501	YG5020	YG602	YG622
	SDMT 120420-ST	1.9	0.60~1.20	1.45	● 0274				● 0666			13.72€	14.29€
	SDMW 120420	1.9	0.60~1.40	1.4	● 0273	● 0341	● 0737	● 0634	● 0691			13.72€	14.29€

Fresado / planeado
Cuerpos para SDM*12

Ángulo de corte : 10° Inserto de 4 puntas positivo



Series	APMX	Designación	EDP 1700..	DC	DCX	ZEPF	LF	TYPE	DCON / TDZ	CDBP	DCSFMS	P.V.P. SET 30 INSERTOS	
												YG602	YG613
SDMT SDMW 1204	1.8	FHF - SDMW12 - D50Z4S22	0604	32.4	50	4	40	Shellmill	22	22	42	292.00€	300.00€
		FHF - SDMW12 - D63Z5S22	0605	45.4	63	5	40		22	22	48	310.00€	315.00€
		FHF - SDMW12 - D80Z6S27	0606	62.4	80	6	50		27	25	58	360.00€	365.00€
		FHF - SDMW12 - D100Z8S32	0607	82.4	100	8	50		32	26	65	400.00€	405.00€
		MHF - SDMW12 - D32Z2M16	0608	14.4	32	2	43	Modular	M16	-	29	290.00€	300.00€
		MHF - SDMW12 - D40Z3M16	0609	22.4	40	3	43		M16	-	29	310.00€	315.00€



P25	P30	P20	P30	P40	K15	P30	P.V.P.
M30							
K30	K30			M40	H15		




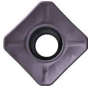









Milling - Face Milling & round Inserts INSERTS LIST

T	Designation	RE (mm)	Fz (mm/tooth)	BS (mm)	YG602	YG622	YG712	YG713	YG613	YG501	YG012	YG501 YG602 YG712 YG713	YG622 YG613 YG012
ADKT General	ADKT 150508 PDTR		0.16 ~ 0.30	1.87	●								9.49 €
	ADKT 150524 PDTR		0.16 ~ 0.30	1.87	●								9.49 €
	ADKT 150532 PDTR		0.16 ~ 0.30	1.87	●								9.49 €
AOMT General	AOMT 123604 PDTR	0.4	0.08 ~ 0.22	1.07	●								8.52 €
	AOMT 123608 PDTR	0.8	0.08 ~ 0.24	0.91	●	●			●				8.52 € 8.91 €
APMT General	APMT 113504 PDTR	0.4	0.15 ~ 0.22	1.26	●	●		●			●		7.24 € 7.60 €
	APMT 113508 PDTR	0.8	0.15 ~ 0.25	1.07	●	●		●	●		●		7.24 € 7.60 €
	APMT 160408 PDTR	0.8	0.16 ~ 0.30	1.11	●	●	●	●	●	●	●		8.52 € 8.91 €
TPKR General	TPKR 1603 PDTR		0.15 ~ 0.28	1.2	●				●				8.52 € 8.91 €
	TPKR 1603 PDTR-PW		0.11 ~ 0.20	1.2	●								8.52 €
	TPKR 2204 PDTR		0.18 ~ 0.35	1.7	●				●				11.35 € 11.86 €
	TPKR 2204 PDTR-PW		0.18 ~ 0.35	1.7	●								11.35 €
TPKN Hard Materials	TPKN 1603 PDTR		0.15 ~ 0.30	1.2	●								8.52 €
	TPKN 1603 PDTR-PW		0.15 ~ 0.28	1.2	●								8.52 €
	TPKN 1603 PDTR-GW		0.15 ~ 0.3	1.62	●								10.21 €
	TPKN 2204 PDTR		0.17 ~ 0.30	1.7	●								11.35 €
	TPKN 2204 PDTR-PW		0.24 ~ 0.40	1.7	●								11.35 €
	TPKN 2204 PDTR-GW		0.24 ~ 0.4	2.49	●								13.59 €
RDKW Hard Materials	RDKW 0501M0		0.10 ~ 0.20		●	●							6.35 € 6.58 €
	RDKW 0702M0		0.12 ~ 0.25		●	●		●					6.35 € 6.58 €
	RDKW 0802M0		0.13 ~ 0.25		●	●							7.24 € 7.60 €
	RDKW 10T3M0		0.16 ~ 0.30		●	●							7.55 € 7.94 €
	RDKW 1204M0		0.16 ~ 0.35		●	●		●			●		8.21 € 8.57 €
	RDKW 1604M0		0.16 ~ 0.35		●								11.47 €
TPUN	TPUN 160308	0.8	0.08 ~ 0.15		●								6.95 €
RDMT General	RDMT 0803M0		0.15 ~ 0.25		●								6.95 €
	RDMT 10T3M0		0.18 ~ 0.28		●								7.55 €
	RDMT 1204M0		0.2 ~ 0.3		●								8.52 €
RDMW Hard Materials	RDMW 0802M0		0.05 ~ 0.15		●								7.24 €
	RDMW 10T3M0		0.1 ~ 0.25		●								7.55 €
	RDMW 1204M0		0.16 ~ 0.3		●								8.21 €
RPMT General	RPMT 08T2M0		0.10 ~ 0.24		●			●	●				7.24 € 7.60 €
	RPMT 10T3M0		0.16 ~ 0.30		●			●	●				7.55 € 7.94 €
	RPMT 1204M0		0.20 ~ 0.35		●	●	●	●	●	●			8.52 € 8.91 €

P25	P30	P30	P30	P40	K15	N15	P.V.P.
M30							
K30	K30			M40	H15		
S20							

Milling - Face Milling & round Inserts

INSERTS LIST

T	Designation	RE (mm)	Fz (mm/tooth)	BS (mm)	YG602	YG622	YG012	YG713	YG613	YG501	YG50	YG501 YG602 YG713	YG622 YG613 YG012	
OFER General	 OFER 070405	0.5	0.22 ~ 0.50		● 0209								15.46 €	
OFMT General	 OFMT 05T308	0.8	0.15 ~ 0.25		● 0032								12.32 €	
SEKT General	 SEKT 1204 AFTN	1.1	0.20 ~ 0.35	1.18	● 0055	● 0416							9.79 €	10.21 €
	SEKT 1204 - ST	1.1	0.08 ~ 0.30	1.18	● 0257	● 0417			● 0722				9.79 €	10.21 €
	SEGT 1204 -AL	1.1	0.1~0.35	2.01							● 0467		15.53 €	
SEMT General	 SEMT 1204 AFTN	1.2	0.26 ~ 0.4	1.24	● 0052								9.79 €	
	SEMT 13T3 AGSN	1.5	0.15 ~ 0.3	1.31	● 0203								9.79 €	
SEKR General	 SEKR 1203 AFTN	0.4	0.14 ~ 0.30	1.4	● 0051								9.79 €	
	SEKR 1203 AFTN -PW	0.4	0.14 ~ 0.30	1.4	● 0296								9.79 €	
SEKN Hard Materials	 SEKN 1203 AFTN	0.4	0.22 ~ 0.35	1.4	● 0054								10.09 €	
	SEKN 1203 AFTN -PW	0.4	0.22 ~ 0.35	1.4	● 0297								10.09 €	
	SEKN 1203 AFTN -GW	0.4	0.23 ~ 0.35	2	● 0304								12.14 €	
SPKR General	 SPKR 1203 EDTR		0.15 ~ 0.35	1.4	● 0050								10.09 €	
	SPKR 1203 EDTR -PW	0.8	0.15 ~ 0.35	1.4	● 0298								10.09 €	
SPKN Hard Materials	 SPKN 1203 EDTR	0.8	0.16 ~ 0.34	1.4	● 0048								9.19 €	
	SPKN 1203 EDTR - PW	0.8	0.20 ~ 0.35	1.4	● 0279								9.79 €	
	SPKN 1203 EDTR - GW	0.6	0.15 ~ 0.28	1.51	● 0280								11.78 €	
SPMT General	 SPMT 120408	0.8	0.15 ~ 0.3		● 0223								10.46 €	
SPUN General	 SPUN 120308	0.8			● 0224								10.09 €	
RDKT General	 RDKT 0802M0		0.15 ~ 0.25		● 0035								7.24 €	
	RDKT 10T3M0		0.15 ~ 0.28		● 0041								7.55 €	
	RDKT 1204M0		0.20 ~ 0.30		● 0034			● 0635	● 0678				8.52 €	8.52 €
	RDKT 1604M0		0.20 ~ 0.35		● 0539								11.91 €	
RDKT-ST Stainless Steel Super Alloy	 RDKT 0802M0 - ST		0.08 ~ 0.25		● 0292								7.24 €	
	RDKT 10T3M0 - ST		0.08 ~ 0.28		● 0293					● 0620			7.55 €	7.94 €
	RDKT 1204M0 - ST		0.10 ~ 0.30		● 0294					● 0621			8.52 €	8.91 €
RDKT-TR Hardened Steel	 RDKT 0802M0 - TR		0.18 ~ 0.35		● 0284	● 0339	● 0745						7.24 €	7.60 €
	RDKT 10T3M0 - TR		0.22 ~ 0.40		● 0285	● 0338	● 0744	● 0651					7.55 €	7.94 €
	RDKT 1204M0 - TR		0.22 ~ 0.40		● 0272	● 0340	● 0743	● 0650					8.52 €	8.91 €

CONSULTE NUESTRO CATÁLOGO ON-LINE PARA MAS INSERTOS!!!

CONDICIONES DE CORTE



Cutting Speed			Vc (m/min.)											
ISO	VDI	Sub Gr	YG602		YG622		YG713		YG613		YG501		YG5020	
			Min	Max	Min	Max	Min	Max	Min	Max	Min	Max	Min	Max
P	1~5	Non-Alloyed Steel	140	380	140	400	170	300	90	230	-	-	-	-
	6~9	Low-Alloyed Steel	120	300	120	320	180	250	70	210	-	-	-	-
	10~11	High-Alloyed Steel	70	150	70	170	100	140	60	100	-	-	-	-
M	12~13	Ferritic & Martensitic	120	200	-	-	-	-	80	180	-	-	-	-
	14	Austenitic Stainless Steel	130	250	-	-	-	-	100	200	-	-	-	-
K	15~16	Grey Cast Iron	120	250	120	270	-	-	-	-	180	350	200	350
	17~18	Nodular Cast Iron	130	220	130	240	-	-	-	-	120	270	150	300
N	21~30	Non-Ferrous Metals (Al)	-	-	-	-	-	-	-	-	-	-	-	-
S	31~37	Superalloys & Titanium	25	45	-	-	-	-	20	40	-	-	-	-
H	38~41	Hard Materials	40	80	40	100	-	-	-	-	50	90	-	-

Promoción válida hasta el 31 de diciembre de 2023 o fin de existencias



Herramientas YG

www.yg-1.es

SPAIN M23-1

Sijalon
Suministros industriales

Suministros industriales
Jalón, S.L.

C/ La Sabina, 61 50171
La Puebla de Alfindén,
Zaragoza (España-Spain)
Tel. 976 10 98 70
sijalon@sijalon.net
www.sijalon.com